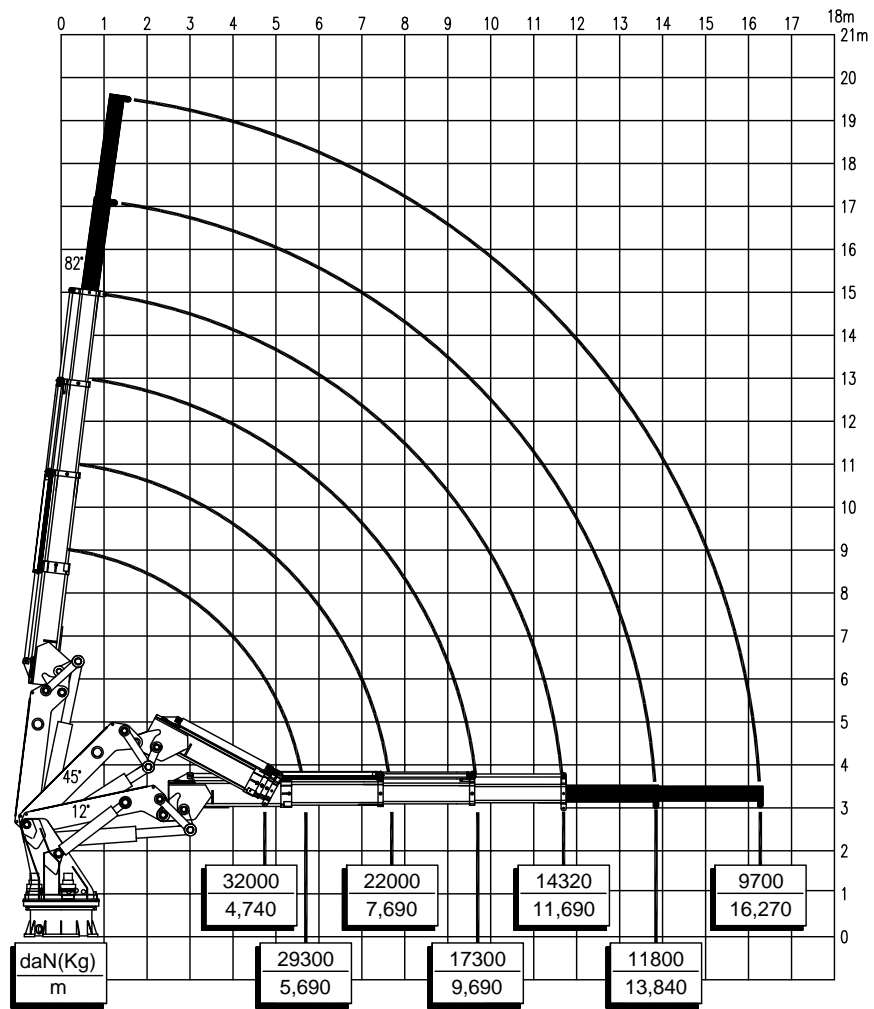


EFFER 180000-3S

LOAD DIAGRAM



Dismount the manual extensions when not used

LIFTING CAPACITY VALUES ARE VERIFIED ACCORDING TO GERMAN STANDARDS DIN 15018, H1 GROUP B3, **INTEGRATED WITH 5° HEEL - 2° TRIM.**

COD. 3000260/A