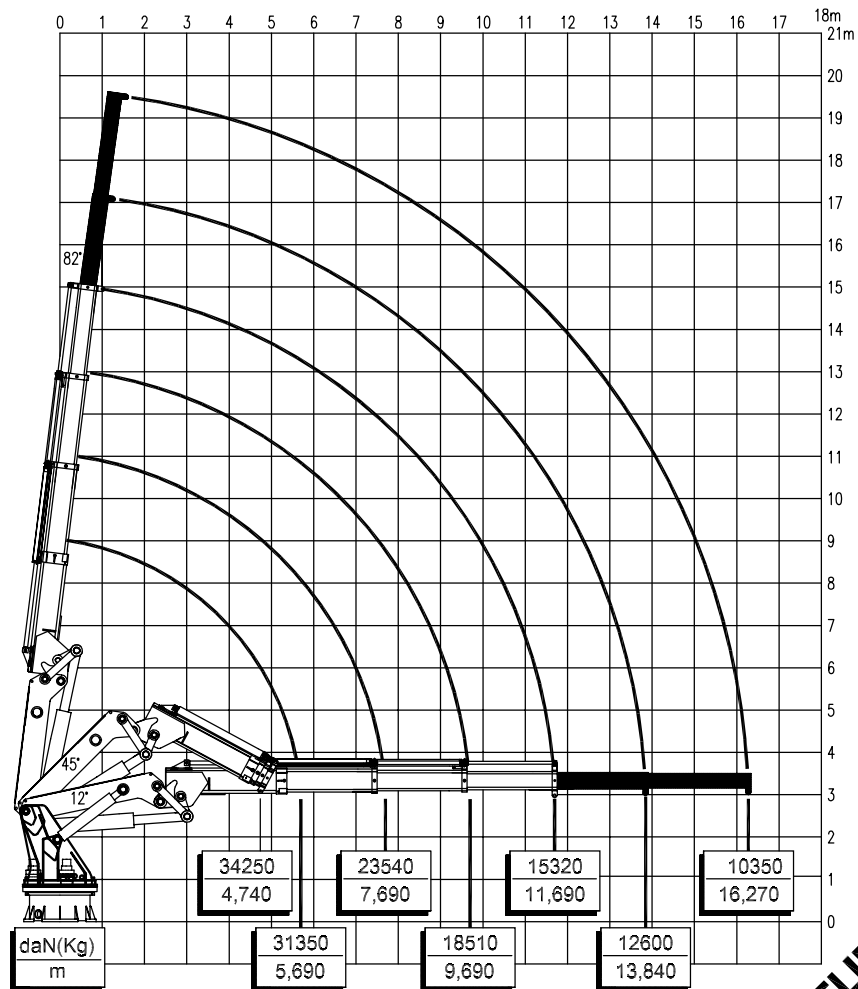


# EFFER 200000-3S

## LOAD DIAGRAM



*Dismount the manual extensions when not used*

LIFTING CAPACITY VALUES ARE VERIFIED ACCORDING TO GERMAN STANDARDS  
DIN 15018, H1 GROUP B3, **INTEGRATED WITH 5° HEEL - 2° TRIM.**

**PRELIMINARY**

COD. AD30010\_0